

Eurailspeed

Round table 3

Akira Hattori

Executive Officer, Vice President

Rolling Stock Company

Kawasaki Heavy Industries, Ltd.



Under the patronage of



Organisers



Partners



The Role of European Railways



Media partner



eurailSpeed

The future of High-Speed Rail

9 November, 2005

**Kawasaki Heavy Industries, LTD
Rolling Stock Company**

Akira Hattori

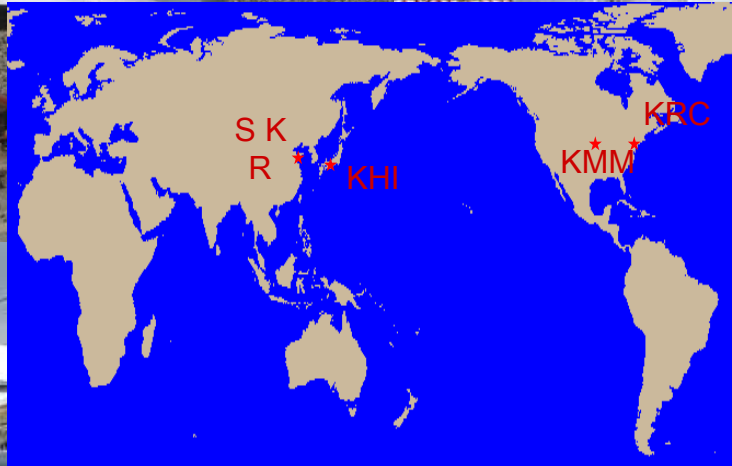
Kawasaki Rolling Stock Business



JR East
FASTECH 360km/h



NYCT R143



JR Central

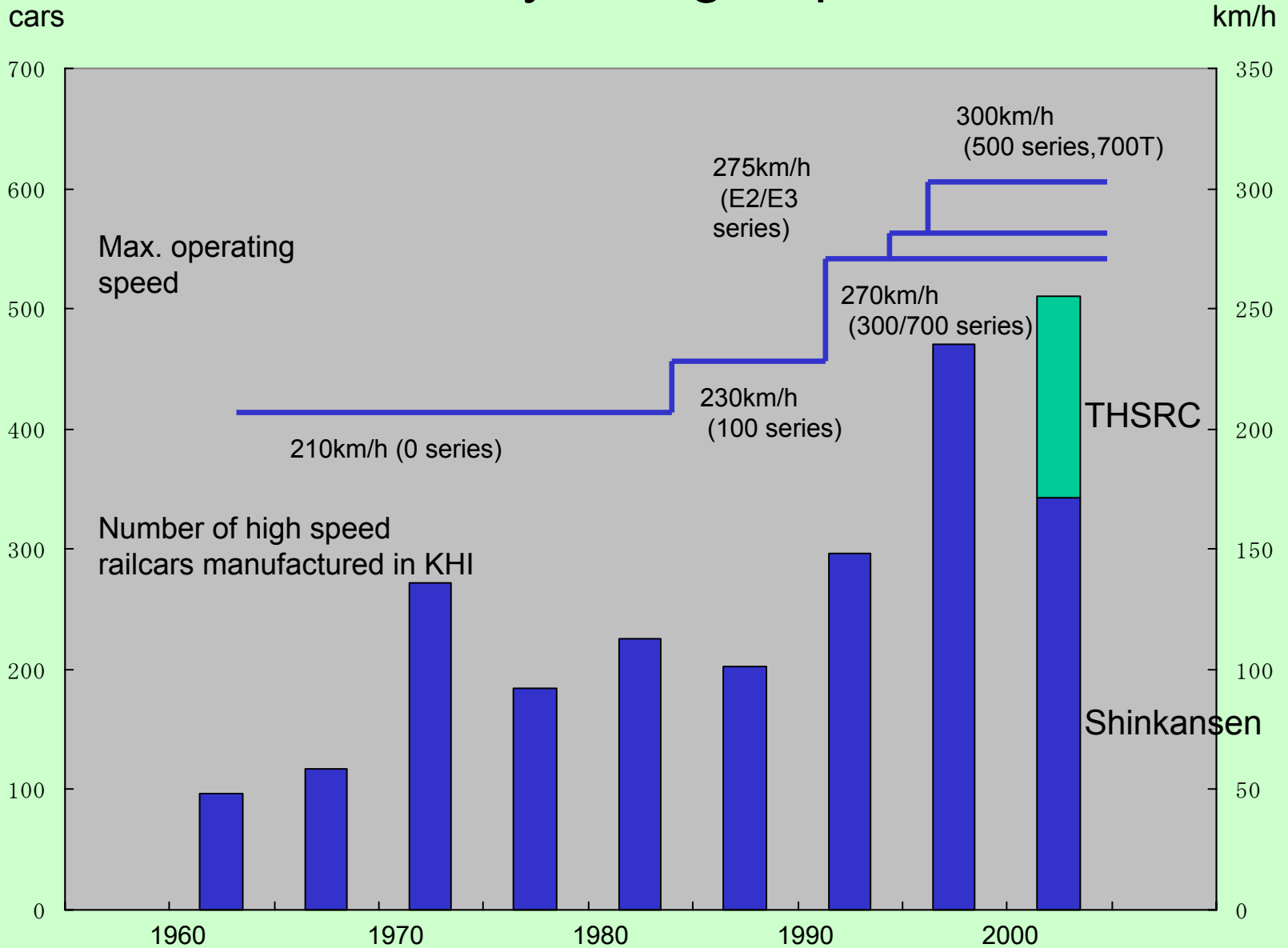


THSRC 700T 300km/h



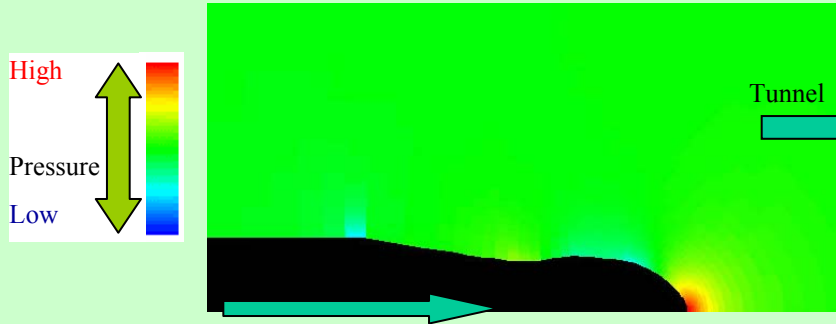
CHINA MOR 200km/h EMU
Picture : Based Car, Series E2 (JR East)

Product History of High Speed Railcar

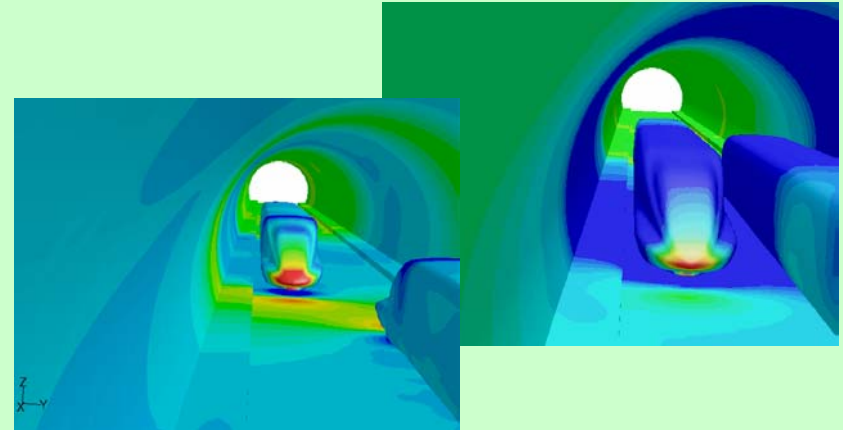


Aerodynamic Analysis

Simulation of Best Nose Shape



Simulation of Trains Passing in Tunnel



Wind Tunnel Test



Single Arm pantograph



JRWest 500

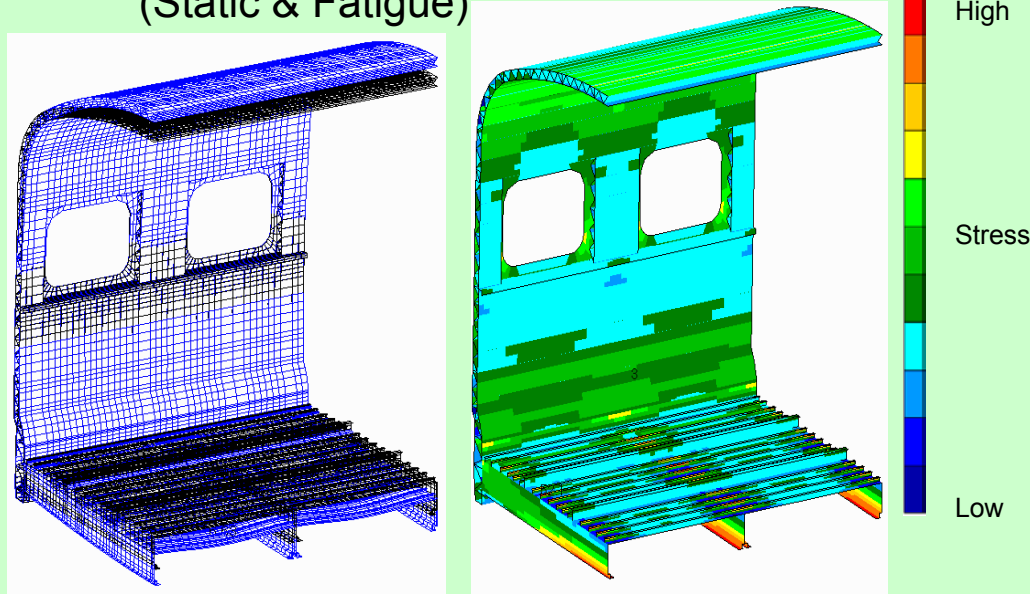


JREast E2-1000

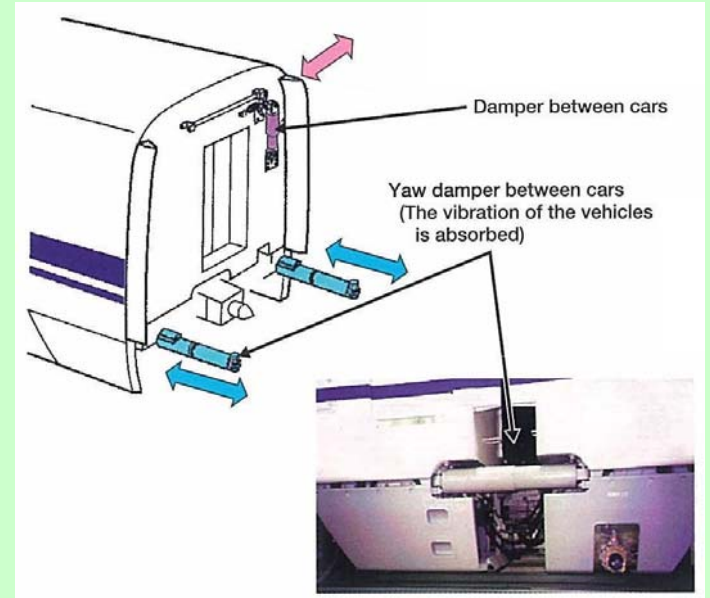
Structure and Vibration

FEA of Air Tightness Load

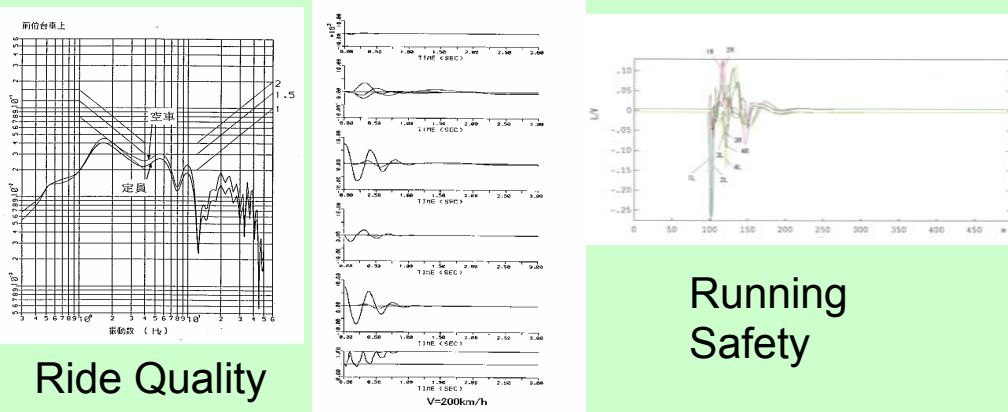
(Static & Fatigue)



Dampers between car ends



Dynamic Analysis of Bogie

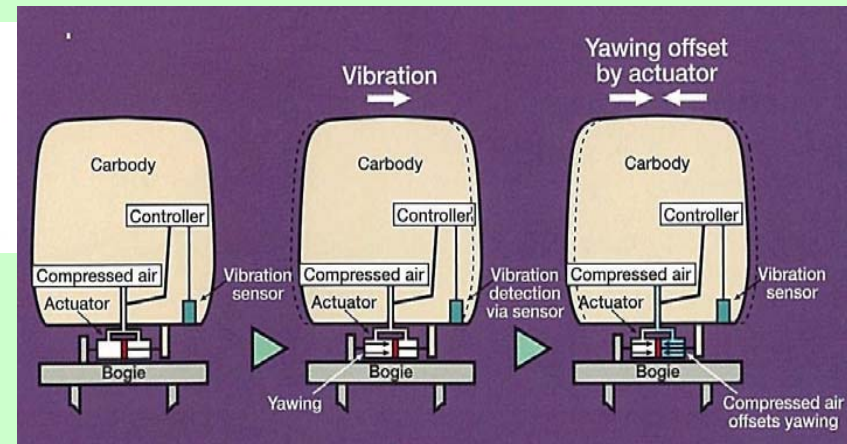


Ride Quality

Running Stability

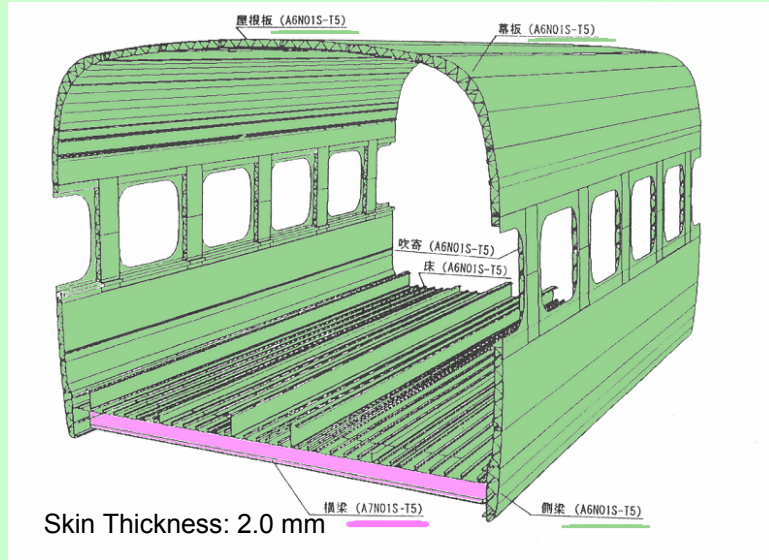
Running Safety

Full Active control



Weight Reduction

Carbody - Aluminum Double Skin

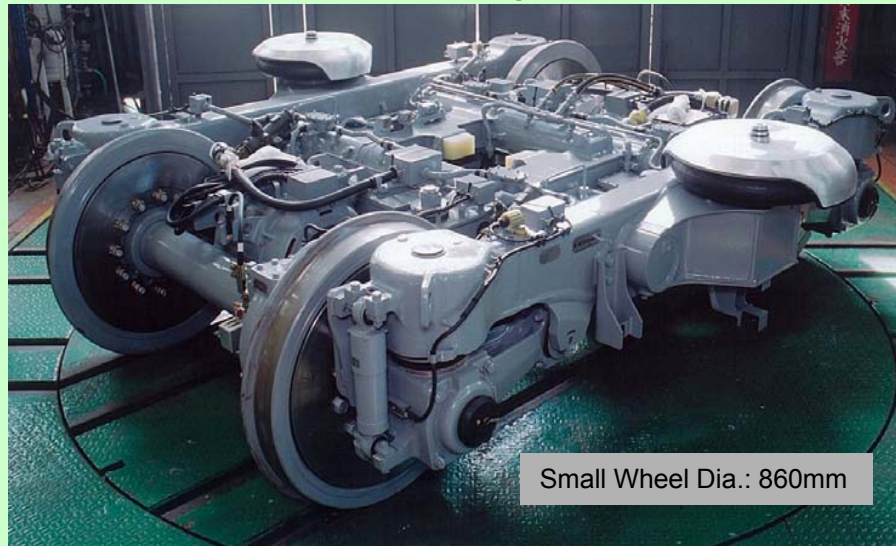


Carbody - CFRP

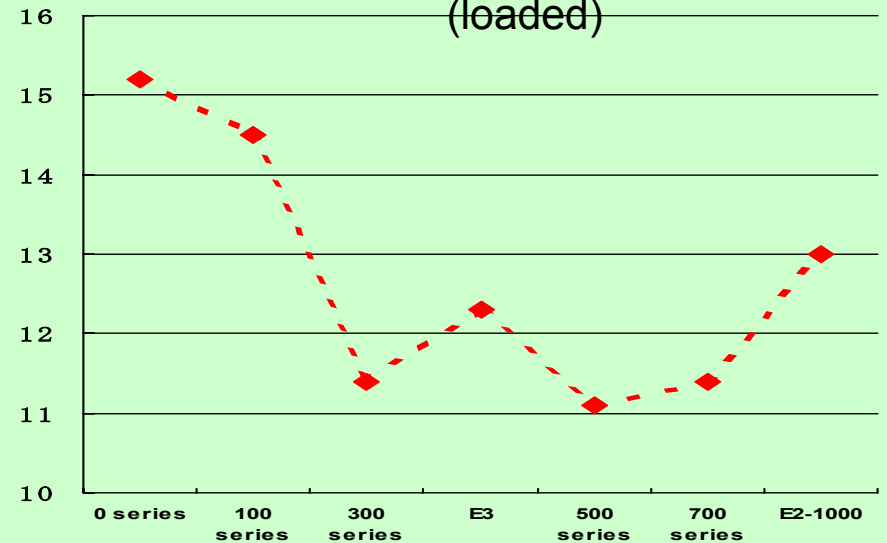


350kg(CFRP) vs. 500kg(AL)

Bolsterless Bogie



History of Maximum AXLE LOAD (loaded)



Future of High-Speed Rail

